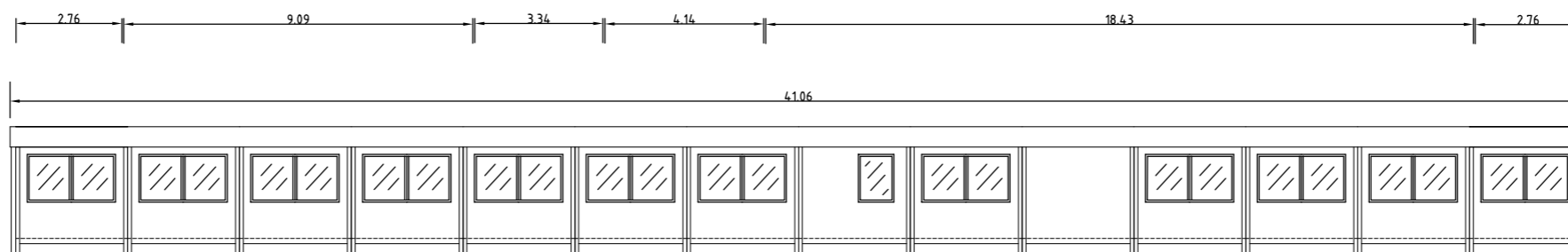
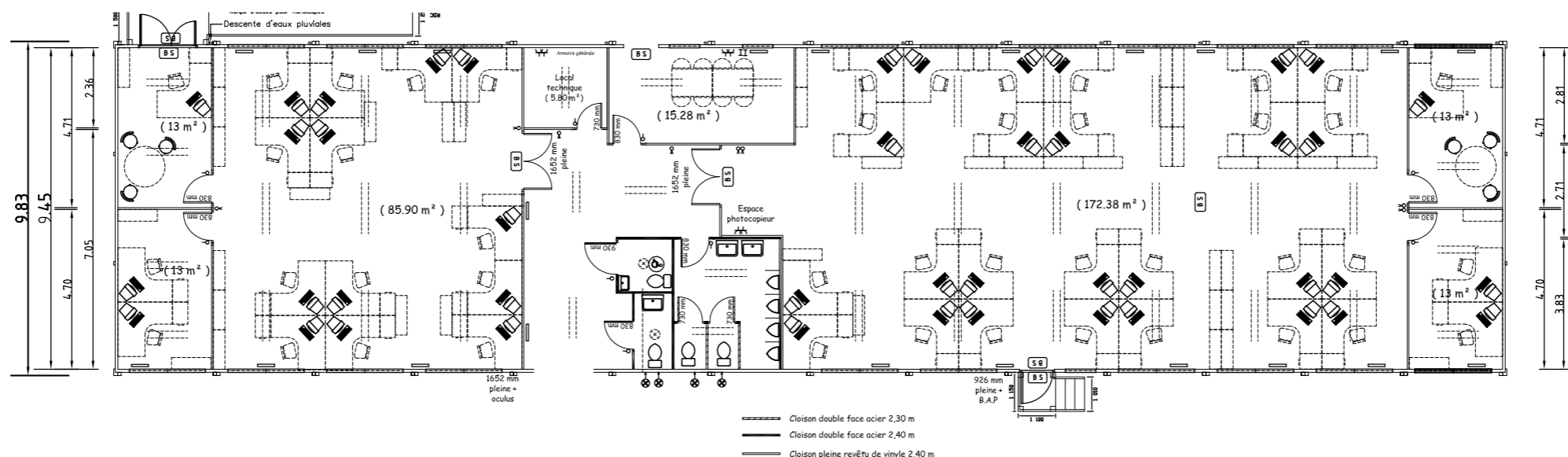
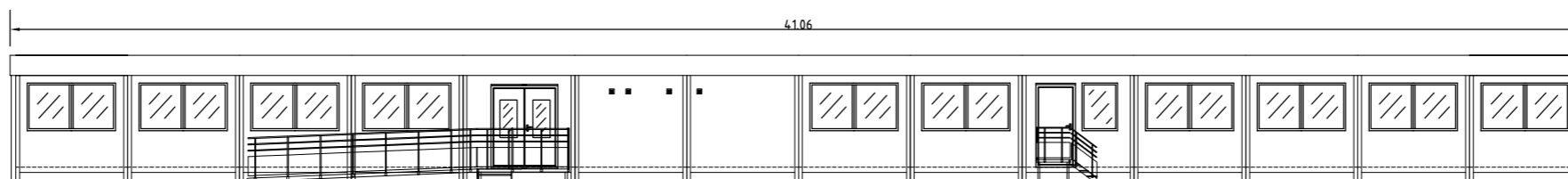


Bâtiment Ultima, utilisation bureaux, salle de réunion et sanitaires



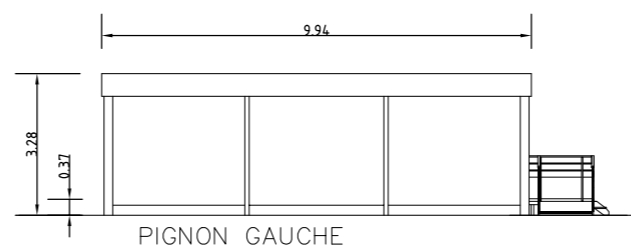
FACADE ARRIERE



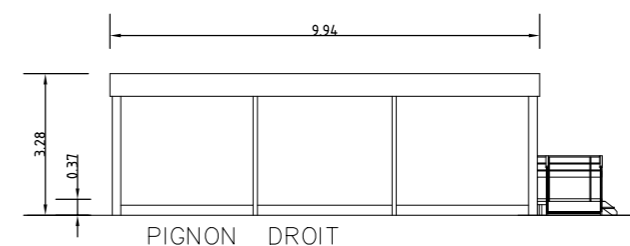
FACADE PRINCIPALE

REMARQUE
LE MOBILIER EST DESSINE
A TITRE INDICATIF

Tous les postes de travail sont munis de :
_ 3 prises 220 V
_ 3 prises info (RJ45)



PIGNON GAUCHE



PIGNON DROIT